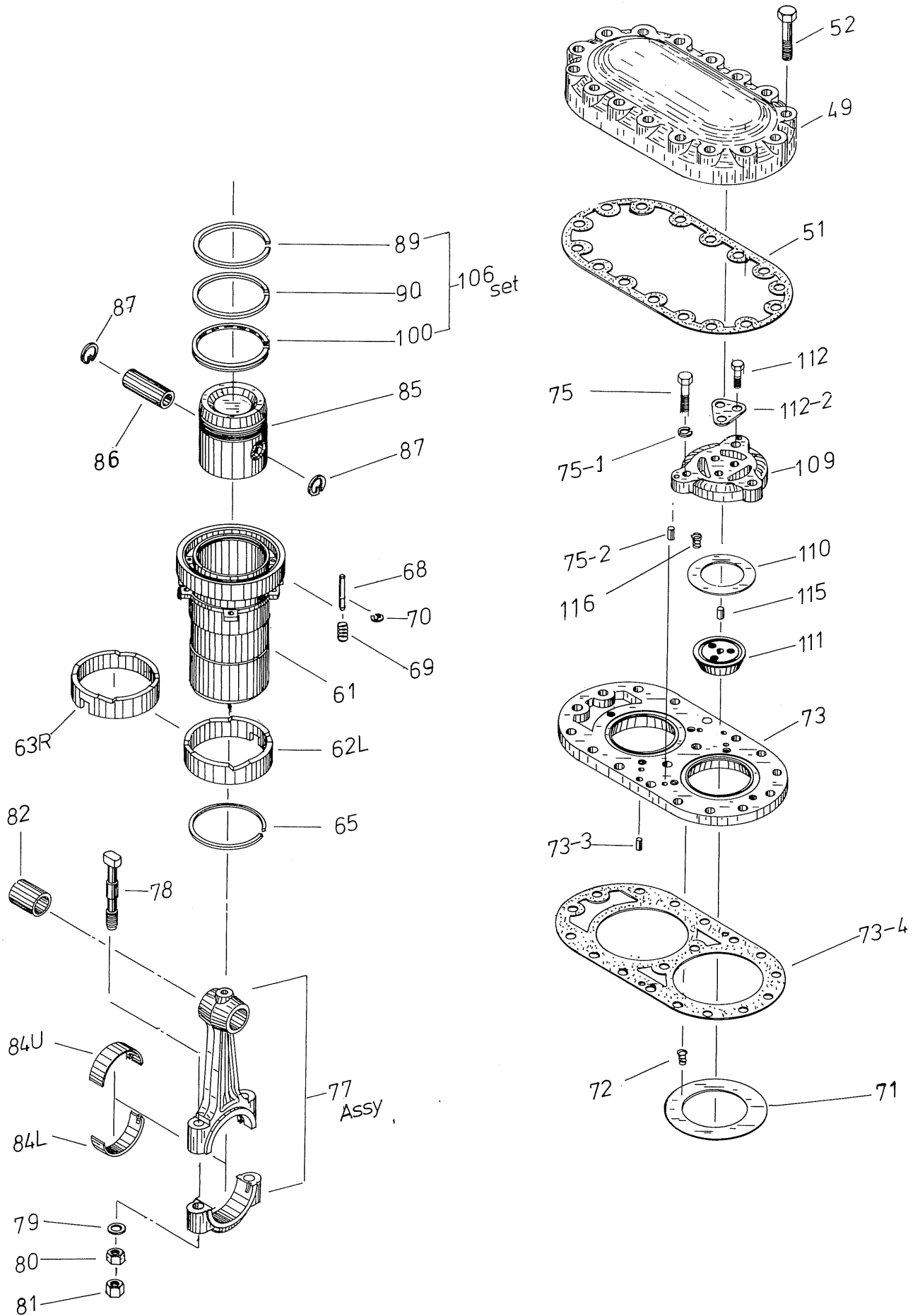
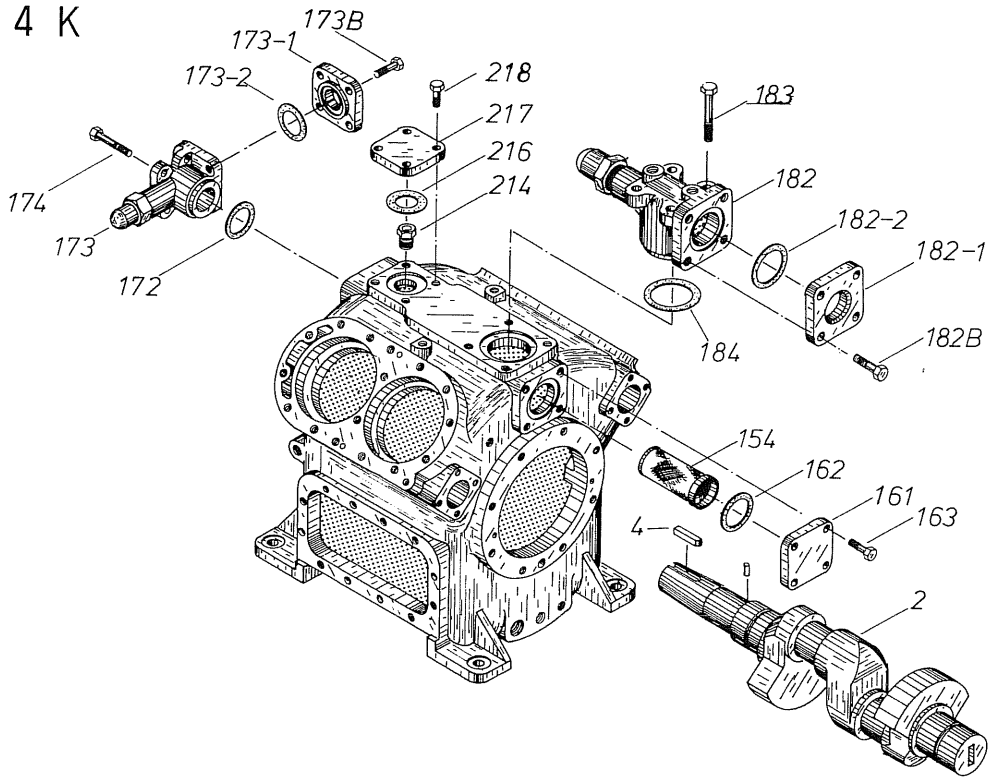


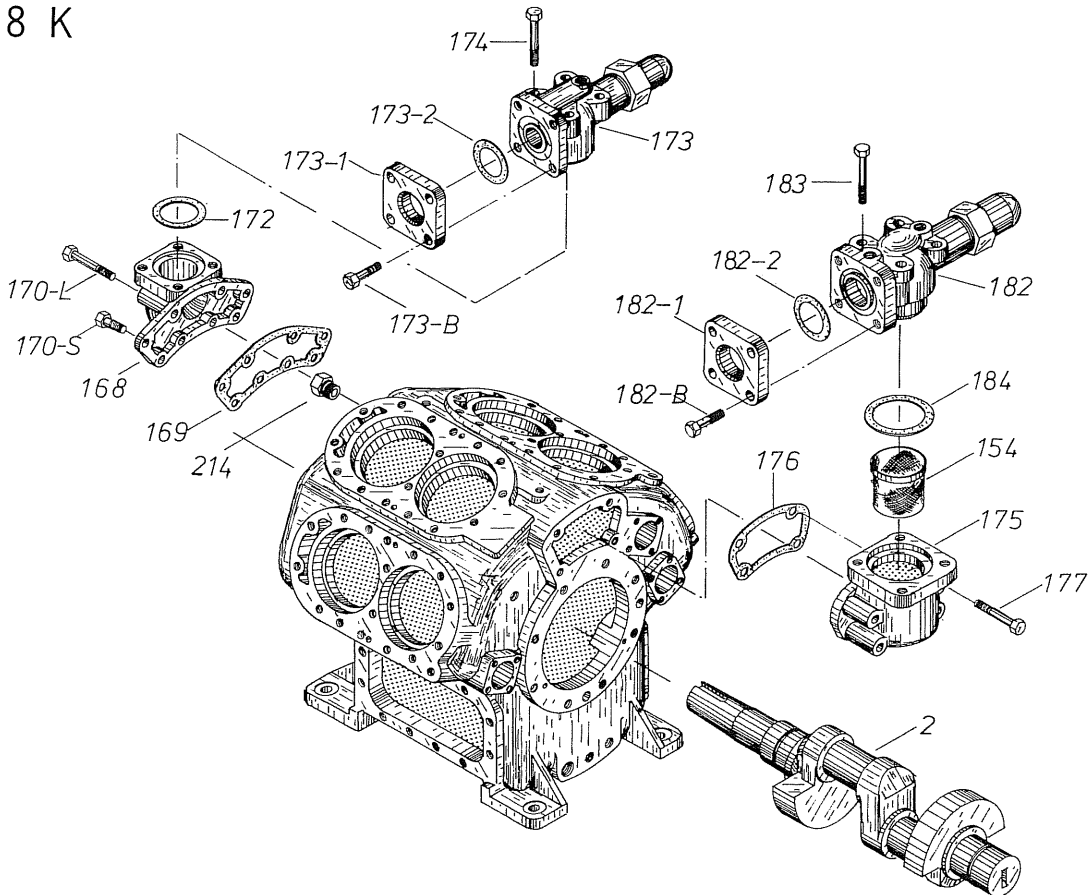
Fig. 3 K Series Compressor, Exploded View

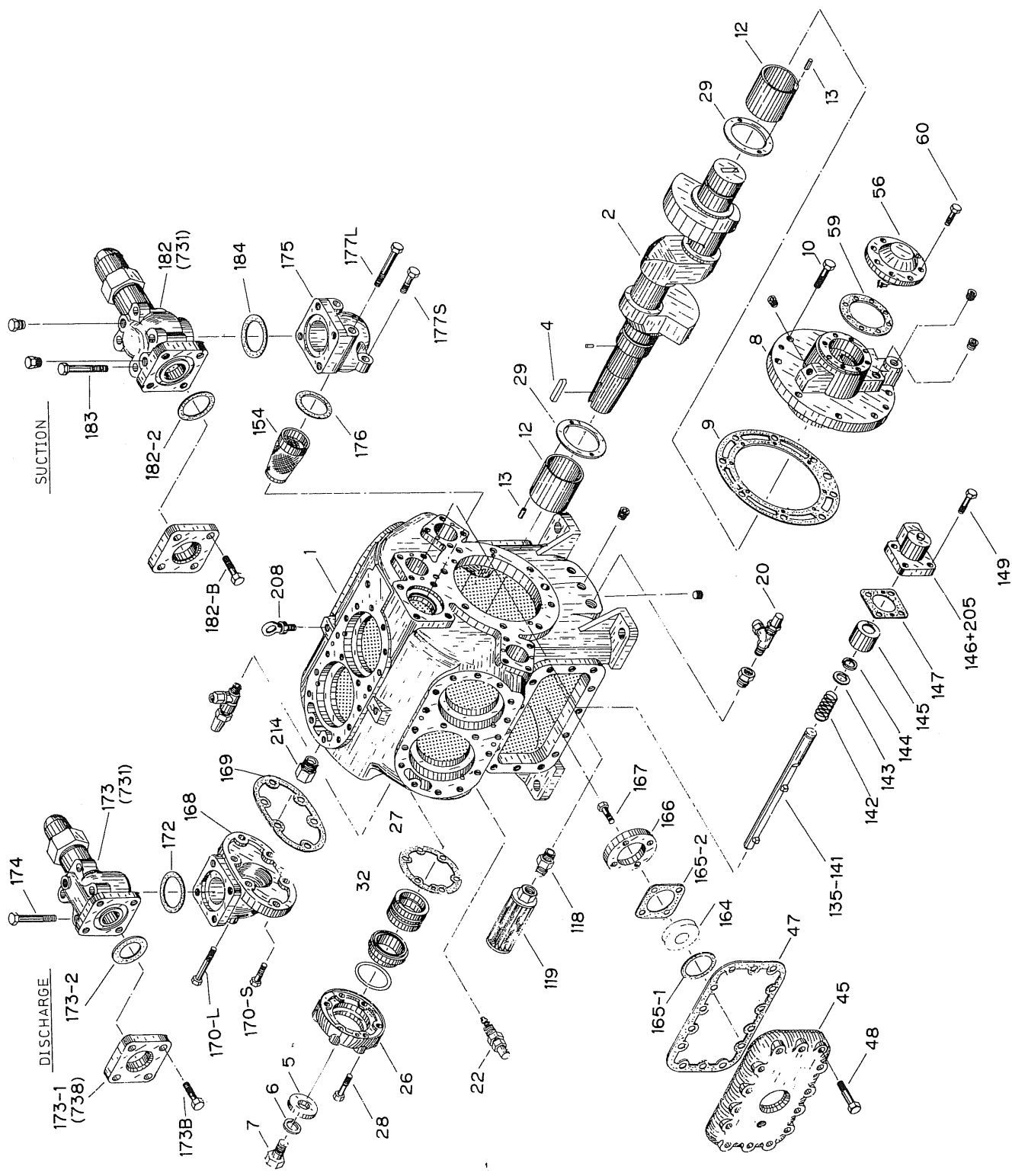


4 K



8 K





No.	Part No.	Name of Parts	Material	Q' ty			Remarks	No.	Part No.	Name of Parts	Material	Q' ty			Remarks
				4K	6K	8K						4K	6K	8K	
1	1	Crank case	FC25	1	1	1		58	164	Oil sight glass	BH54	2 or 1	2 or 1	2 or 1	Substitute Model A
2	2	Crankshaft	FCD60	1	1	1		59	166	Gland, oil sight glass	SS41	2 or 1	2 or 1	2 or 1	
3	2-1	Retainer drive pin	SK5	1	1	1		60	167	Bolt, oil sight glass gland	SCM435	8 or 4	8 or 4	8 or 4	M8 x L25
4	4	Pulley key	S45C	1	1	1	ø3 x L8 (Spring pin)	61	165-1	Gasket, oil sight glass	V6405	2 or 1	2 or 1	2 or 1	t = 1.5
5	7	Pulley set bolt	SCM435	1	1	1	M20 x L50	62	165-2	Gasket, oil sight glass	V6405	2 or 1	2 or 1	2 or 1	t = 1.5
6	5	Pulley flat washer	SS41	1	1	1		63	146	Unloader cover	~	2	3	3	Built in sol. valve
7	6	Spring washer, pulley set bolt	SWRH62 (B)	1	1	1	For M20	64	147	Gasket, unloader cover	V6405	2	3	3	
8	8	Housing, bearing	FC25	1	1	1	Combined to oil pump	65	149	Bolt, unloader cover	SCM435	8	12	12	M8 x L135
9	9	Gasket, bearing housing	V6405	1	1	1		66	145	Unloader piston	S25C	2	3	3	Substitute Model A
10	10	Bolt, bearing housing	SCM435	8	8	8	M10 x L35	67	135	Push rod, unloader (1)	AC2B-F	1	1	1	
11	12	Min bushing	WJI (F1)	2	2	2		68	136	Push rod, unloader (2)	AC2B-F	1	1	1	
12	29	Thrust washer	LBC3 (F100)	2	2	2		69	137	Push rod, unloader (3)	AC2B-F	-	1	1	
13	13	Looking pin, thrust washer	SK5	4	4	4	ø4 x L8	70	143	Washer, unloader push rod	S25C	2	3	3	Substitute Model C
14	22	Oil pressure regulating valve	~	1	1	1	Substitute Model C	71	144	Stop ring, unloader push rod	S45	2	3	3	Substitute S20 Model C
15	26	Shaft seal cover	FC25	1	1	1		72	142	Spring, unloader device	SWC	2	3	3	Substitute Model A
16	27	Gasket, shaft seal cover	V6405	1	1	1		73	154	Filter, suction	SUS316	1	1	1	
17	28	Bolt, shaft seal cover	SCM435	6	6	6	M8 x L35	74	175	Elbow, suction	FC25	-	1	1	
18	32	Mechanical seal assembly	~	1	1	1		75	176	Gasket, suction elbow	V6405	-	1	1	Sub. 65A Valve gasket
19	49	Head cover	FC25	2	3	4		76	177L	Bolt, suction elbow (1)	SCM435	-	2	Δ4	M16 x 140 Δ x 120
20	51	Gasket, head cover	V6405	2	3	4		77	177S	Bolt, suction elbow (2)	SCM435	-	2	-	M16 x 150
21	52	Bolt, head cover	SCM435	28	42	56	M10 x L75	78	168	Cover, sitcharge gas passway	FC25	-	1	1	
22	109	Cage, discharge valve	FC25	4	6	8		79	169	Gasket, discharge gas passway cover	V6405	-	1	1	
23	75	Bolt, discharge valve cage	SCM435	12	18	24	M8 x L25	80	170L	Bolt, discharge gas passway cover (1)	SCM435	-	2	2	M10 x L100
24	75-1	Position pin, discharge valve cage	S45C	8	12	16	ø6 x L18 (Panel pin)	81	170S	Bolt, discharge gas passway cover (2)	SCM435	-	4	6	M10 x L45
25	110	Discharge plate valve	SUS 403 VA	4	6	8		82	119	Filter, oil	SUS316	1	1	1	Substitute Model C (#20)
26	111	Seat, discharge valve	SNC631	4	6	8		83	118	Hexhead nipple, PT 1/2 x PT /12	S25	1	1	1	
27	112	Bolt, discharge valve seat	SCM435	12	18	24	M6 x L25	84~87		(Discontinued numbers)					
28	112-2	Retainer, discharge valve seat bolt	SPCC	4	6	8	t = 0.8	-	305	Pressure equalizing pipe assembly	~	2	2	2	
29	115	Positioning pin, discharge valve seat	S45C	4	6	8	ø6 x L18 (Panel pin)	88	214	Built-in safety valve	~	1	1	1	PT 1"
30	116	Spring, discharge valve	SK5	24	36	48	Substitute Model C	89	182-1	Companion flange, suction	S25C	1	1	1	
31	73	Valve plate	FCD45	2	3	4		90	182-2	Gasket, companion flange	V6405	1	1	1	
32	73-4	Gasket, valve plate	V6405	2	3	4		91	182B	Bolt, companion flange	SCM435	4	4	Δ4	Δ M20 x L50 M16 x L45
33	73-1	Bolt, valve plate	SCM435	4	6	8	M10 x L25	92	173-1	Companion flange, discharge	S25C	1	1	1	
34	73-3	Positioning pin, valve plate	S45C	4	6	8	ø6 x L18 (Panel pin)	93	173-2	Gasket, discharge flange	V6405	1	1	1	
35	71	Suction plate valve	SUS403 VA	4	6	8		94	173B	Bolt, discharge flange	SCM435	Δ4	4	4	Δ M12 x L40 M16 x L45
36	72	Spring, suction valve	SK5	16	24	32	Substitute Model C	95	182	Service valve, suction	~	1	1	1	
37	61	Cylinder sleeve	FC25	4	6	8		96	184	Gasket, suction service valve	V6405	1	1	1	
38	61-1	Positioning pin, cylinder sleeve	SK5	4	6	8	ø3 x L8 (Spring pin)	97	183	Bolt, suction service valve	SCM435	Δ4	4	4	Δ x L110 M16 x L140
39	62L	Cam ring (Keftward slanted)	FC25	1	3	4		98	173	Service valve, discharge	~	1	1	1	
40	63R	Cam ring (Rightward slanted)	FC25	2	2	2		99	172	Gasket, discharge service valve	V6405	1	1	1	
41	65	Retaining ring, unloader	SK5	3	5	6		100	174	Bolt, discharge service valve	SMC435	x4	4	Δ4	M16 x 130 M16 x L110 x x L120
42	68	Lift pin, unloader	S50C-D	12	20	24	ø5 x L69.3	101-106		(Discontinued numbers)					
43	69	Spring, unloader lift pin	SWC	12	20	24	Substitute Model C	107	20	Oil feeding valve, PT 3/8 Angle	~	1	1	1	MR-3FR
44	70	Stop ring, lift pin	S60CM	12	20	24	E4	108	171	Valve, age purge PT 1/4	~	1	1	1	MR-2FR
45	85	Piston	AC8 A or B	4	6	8		109	208	Eye bolt, hanger	SF40	2	2	2	M12
46	86	Pin, piston	SCM415	4	6	8	øwt x L73	110	~	Check joint	~	3	3	3	HP, LP, OP
47	87	Lock spring, piston pin	SK5	8	12	16	H25, Substitute Model C								
48	89	Piston ring	FC25	8	12	16	1st & 2nd								
49	100	Oil ring	FC25	4	6	8	3rd								
50	77	Connecting rod	T31-T6	4	6	8									
51	78	Bolt, connecting rod	SCM435	8	12	16	Special bolt M10 x L81								
52	80 & 81	Nut, connecting rod	S45C	16	24	32	M10								
53	79	Washer, connecting rod	S45C	8	12	16									
54	84	Bearing halves, connecting rod	WJI (F1)	8	12	16	2PCS / EACH								
55	45	Hand hole cover (Blind)	FC25	1	1	1									
~	46	Hand hole cover (with window)	FC25	2 or 1	2 or 1	2 or 1									
56	47	Gasket, hand hole cover	V6405	2	2	2									
57	48	Bolt, hand hole cover	SCM435	24	24	24	M10 x L45								

Notes:

\* "Substitute Model C" means "Interchangeable with the service parts for Model C Mycom compressor.

\* On order of the parts, do not forget to designate respective No. and part No.