

Natural refrigerant



SCREW COMPRESSOR
Two Stage OPEN TYPE UNIT

MCN SERIES



MYEKAWA
MYCOM

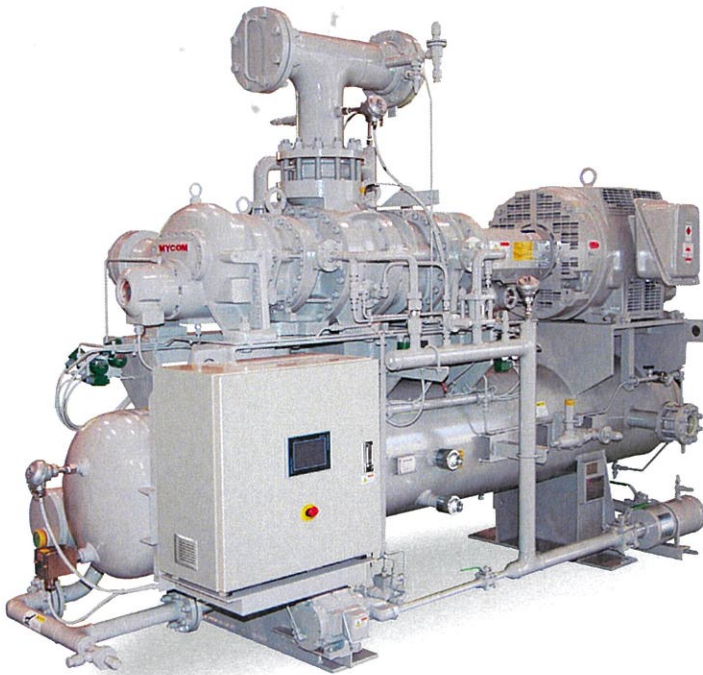
Industrial Refrigeration Packages

High Efficiency Refrigerant

SCREW COMPRESSOR

[Two Stage]

MCN SERIES



Adopted Natural Refrigerant Ammonia

- High capacity@BkW
- Low environmental impact

GWP (Global Warming Potential) < 1
 ODP (Ozone Depletion Potential) = 0

FLEXIBLE SELECTION

- Compressor : C series
- Oil cooler : Thermosyphon, Water cooled, Liquid injection
- Motor : Can be selected request
- Option : Full flow lubrication and Dual oil filter selection available

COMPOUND TWO STAGE

- High efficiency at low temperature
- Compact design packages

SPECIAL CONTROL PANEL

- New control panel (MYPRO TOUCH)
- Icon touch type on the screen
- Can be selected two screen type (standard:type M)

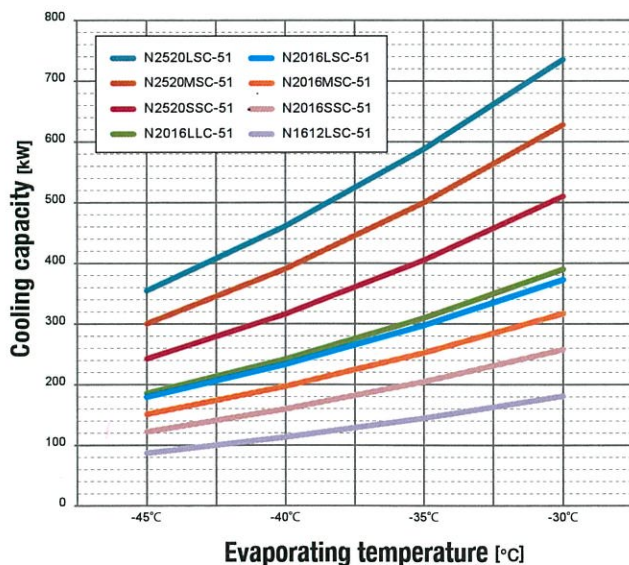
HIGH RELIABILITY & QUALITY

- High quality parts (oil pump, oil filter, oil separator)
- Reliable service by Mayekawa
- Robust packages

Performance charts

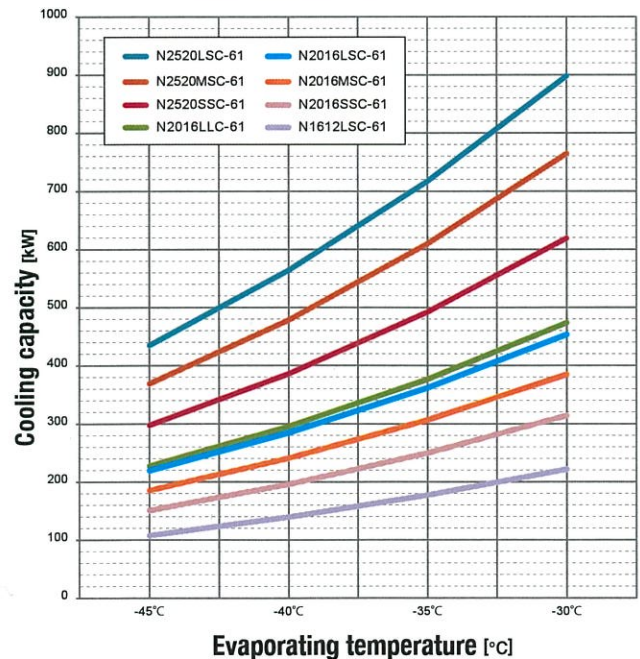
▶ 50Hz

Condensing temperature: 40°C
 Suction Superheat: 0°C
 Rotation speed : 2950rpm
 Liquid Subcooling : 0°C



▶ 60Hz

Condensing temperature: 40°C
 Suction Superheat: 0°C
 Rotation speed : 3550rpm
 Liquid Subcooling : 0°C



Specifications

Item	Model	1612			2016			2520				
		LSC	SSC	MSC	LSC	LLC	SSC	MSC	LSC			
Compressor model *1		LSC	SSC	MSC	LSC	LLC	SSC	MSC	LSC			
Applied Code		Japanese code based										
Design Pressure		High Press. Side : 1.6MPa / Low Press. Side : 1.26MPa										
Design Temperature		High Press. Side : 90°C / Low Press. Side : -50°C										
Standard condition *2		Condensing temperature from 35°C - 40°C / Evaporative temperature from -45°C - -30°C										
Power source frequency		50Hz : 2950rpm / 60Hz : 3550rpm										
Displacement : m ³ /h	50Hz	247	480	496	512	623	937	969	1000			
	60Hz	297	577	597	616	749	1127	1166	1203			
Oil separator		Three stage horizontal oil separator which includes a fine coalescing type element.										
Oil cooling *3		Thermosyphon oil cooler : Shell & tube, carbon steel Water-cooled oil cooler : Shell & tube, stainless steel										
Liquid sub-cooler *4		Plated heat exchanger, stainless steel						Shell & tube, carbon steel				
Control panel		MYPRO TOUCH (M)										
Range of capacity control	%	100 - 10 (Continuous)										
Lubrication		Pre-lubrication : Canned pump										
	Initial oil charge : Liter	150	240						400			
Piping connection size: B (Inches)	Suction JPI#150	6	6						10			
		Discharge JIS20K	2	2&1/2						2&1/2		
		Safety valve	3/4	1						1&1/4		
	Thermosyphon oil cooling	Liquid inlet JIS20K	1&1/4	1&1/4						1&1/2		
		Gas outlet JIS20K	2&1/2	2&1/2						3		
	Water-cooled oil cooling	Water inlet JIS5K	1&1/4	2						2&1/2		
		Water outlet JIS5K	1&1/4	2						2&1/2		

*1.C series compound two stage screw compressors.

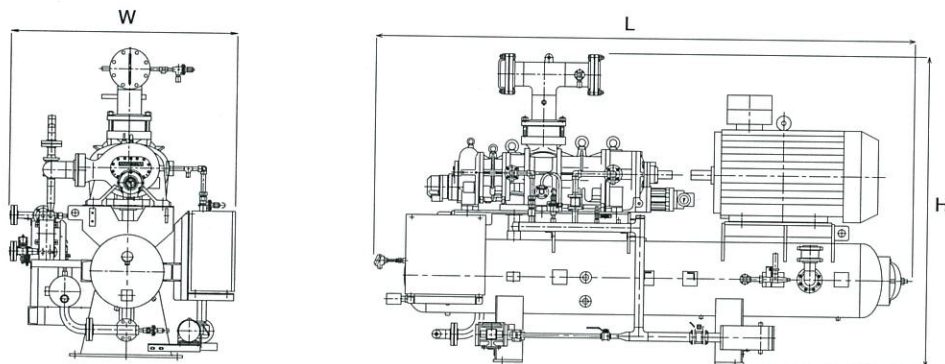
*2.If operating condition is not standard, contact factory.

*3.Thermosyphon oil cooling is standard, and water-cooled oil cooling is an option.

*4.For 1612,2016, plate type liquid sub-cooler. For 2520, shell & tube type liquid sub-cooler.

Option : Oil separator and motor base modification for over standard range operation. / Combination of the rotor length besides the above mentioned.
Mypro-Touch (S) control panel / Full flow oil lubrication / Dual oil filter.

Outer dimensions



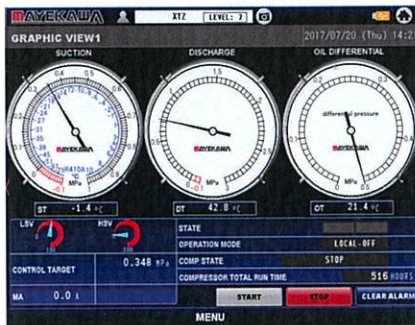
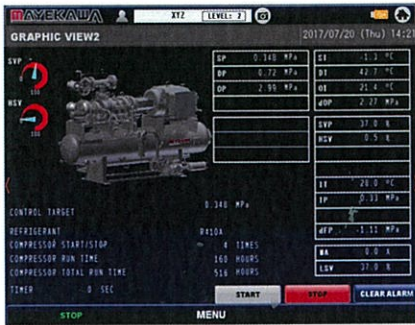
Model		MCN1612LSC	MCN2016LSC	MCN2520LSC
Outer dimension	mm	L3,410 x W1,560 x H1,970	L3,710 x W1,610 x H2,130	L4,530 x W1,850 x H2,650
Dry weight	kg	1,840	2,820	5,600

* The outer dimensions may vary according to the main motor supplied and optional application.

* The dry weight is not include the main motor weight.

COMPRESSOR PACKAGE CONTROL SYSTEM MYPRO TOUCH

TYPE S MENU



Standard Features

- USB connection
- Ethernet connectivity
- Modbus RTU protocol and controller capabilities
- Password protection
- Available SD card storage
- Expandable system control

Optional Features

- Main status set points monitor available at any controller screen
- SSR I/O switch type
- Support multi-language display
- Controller summary overview screens
- Trend graph past data display
- Programmable ID for optional analog inputs
- Calibration menu

Ethernet IP Protocol

- Ethernet IP for communication with AB compact/Control Logix
- Ethernet IP for communication with AB Micrologix
- Modbus TCP protocol

Specifications

Description		Model	Type M	Type S ^{*1}
Screen size			5.7"	12.1"
Display type			TFT LCD Color, 320 × 240 dots	TFT LCD Color, 800 × 600 dots
Display communication			RS485 / Ethernet / USB2.0	
Control voltage		V	100-120 / 200-240	
Electrical frequency		Hz	50 / 60	
Operating temperature ambient condition			0°C -50°C 85% relative humidity	
Dimensions		mm	H700 × W600 × D300	
Analog input	QTY		16(expandable to 32)	
	Current(signal)		DC 4-20mA	
	Voltage(signal)		DC 1-5V	
	Potentiometer input QTY		2	
Analog output	Potentiometer resistance range		0-1000Ω	
	QTY		4	
	Signal current		DC 4-20mA (Load resistance<500Ω)	
Digital I/O	QTY		16(expandable to 32)	
	Digital input Voltage / Ampere rating		No external potential drop to connection. Board provides internal DC 12V Max.25mA.	
	Digital output Solid state relay ratings		Rated load: AC 100-240V,1.2A	

*1. Option : Mypro-Touch (S) control panel.

MAYEKAWA
MYCOM

MAYEKAWA MFG.CO.,LTD.

[Head Office]: 3-14-15 Botan, Koto-ku, Tokyo 135-8482, JAPAN
TEL:(81)3-3642-8181 FAX:(81)3-3643-7094

[Inquiries]: global-contact@mayekawa.co.jp
<http://www.mayekawa.com>

The content of this pamphlet may change without advance notice due to improvements to the product.

* Mayekawa and MYCOM are registered trademarks of Mayekawa Mfg. Co., Ltd.

* MYPRO TOUCH are registered trademarks of Mayekawa Mfg. Co., Ltd and Mayekawa U.S.A. INC.